



 **PowerPoint**

## **User Manual**

# **Automatic Heat Pump Dryer**

Model: P279HPSKW  
P2710HPSKW

### **INSTRUCTIONS:**

Please read and keep safe for future use.

# Content

<b>Section</b>	<b>Page(s)</b>
Warning	2-4
Part Name	5
Installation Instruction	6-8
Quick start	9
The Introduction of Function and Program	10-12
Instructions for use	13
Service guide	14-15
Troubleshooting Guide	16-17
Specification and Circuit diagram	18



# WARNING

- **Safety precautions**

**Tips**

This user manual contains essential information about installing, using, and maintaining the machine. It is important to read the manual thoroughly to ensure proper use of the clothes dryer and to extend its service life. Any malfunctions and damage resulting from not following the precautions specified in the installation and operation instructions are not covered by the manufacturer's warranty, and the manufacturer will not assume any related responsibilities.

- **Warning matters**

- When the clothes dryer is operating normally, please refrain from unplugging or switching off the power. When the machine is not in use or is being cleaned, ensure to unplug it by holding the plug, not the cord. Avoid using wet hands when plugging or unplugging the power cord.
- Do not install clothes dryer in the open air or in humid environments. If it gets wet, ensure it is ventilated and dried before use.
- It is essential to dehydrate wet clothes before placing them in the clothes dryer to avoid water dripping onto electrical components, which could potentially damage the appliance and pose a safety hazard.
- Place the clothes dryer in a well-ventilated area to prevent accidents.
- When the clothes dryer is in operation, avoid using any flammable sprays in its vicinity. In the event of a gas or flammable gas leak, refrain from unplugging the power plug or switching the machine on or off.
- Do not use flammable detergents, dry cleaning solvents, gasoline, banana oil, or other chemicals to dry clothes.
- Do not disassemble, repair, or modify the machine yourself.
- Please refrain from using this clothes dryer if your hands or feet are wet.
- For safety reasons, please ensure that children or individuals with disabilities are not left unattended while using the clothes dryer.
- It is advised not to use the clothes dryer for drying raincoats, bicycle covers, or other items containing rubber or similar elastic materials.



# WARNING

## • Warning matters

- Refrain from placing any hot or heavy objects, such as a pot containing hot water, on the clothes dryer.
- Do not store cigarettes, lighters, dry ice, gasoline, or other flammable materials in the dryer.
- The clothes dryer door should only be opened after the cycle is completed. Opening the door before this may result in overheating and potential burns due to the high temperature inside the dryer.

## • Warning signs of clothes dryer

- Please exercise caution when using this clothes dryer, particularly if the clothing label specifies that the garment should not be machine dried.

## Safety matters




To safeguard your personal and financial safety, as well as that of others, it is imperative to refrain from engaging in the following activities:

- This product is classified as a Class I electrical appliance. Please ensure electrical safety when using it.
  1. A grounded power source must be used, and the ground wire should be directly buried in the ground. It must not be connected to utilities such as water pipes or gas pipelines.
  2. Ensure that the cross-sectional area of the power system's wires meets the requirements for the normal electrical load.
  3. Ensure to use a dedicated socket for the machine. The socket should support more than 10A current. If your home's electrical system does not meet these requirements, do not use the machine.
  4. To avoid installation errors and ensure electrical safety, only qualified electricians should install sockets and connect the ground wire.
  5. If the power cord is found to be damaged, its replacement must be performed by qualified professionals.





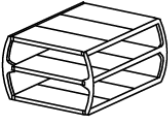
# WARNING

## • Safety matters

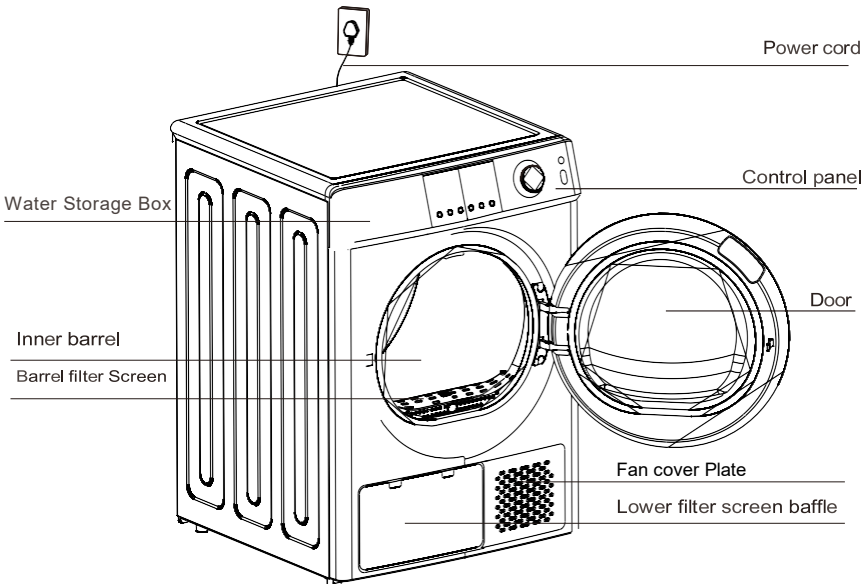
6. Do not connect the ground wire with the live wire or the neutral wire, as this could cause the shell to become electrified and increase the risk of electric shock.
  7. For optimal safety, it is advisable to disconnect the power plug from the socket when the clothes dryer is not in use.
  8. This machine operates using alternating current. It functions normally when the voltage remains within a 10% range.
  9. If it is necessary to use a grounded leakage (grounding protection) circuit breaker, its symbol  must be used to ensure compatibility between the plug and the socket.
- For safety reasons, use the original parts and accessories provided by the manufacturer.
  - If the clothes dryer is no longer functional, cut off the power cord and destroy the door hook. Dispose of waste electrical appliances at the designated processing center.
  - If the material of the clothing is unsuitable for drying in a clothes dryer, refrain from using this appliance for that purpose.
  - Avoid drying clothes that have not been washed.
  - Do not use the clothes dryer if there is a dust hazard, such as coal or rock powder.
  - Do not lean on, climb, or sit on the machine.
  - If the ambient temperature around the clothes dryer falls below 0°C, frost damage may occur.
  - Keep packaging materials away from children.

# Accessories

## • Attachment specification

Steelbracket <small>*This picture is only for the product with the rack and holder</small>	Externaldrain pipeassembly	Plastic bracket <small>*This picture is only for the product with the rack and holder</small>
		

## • Part name

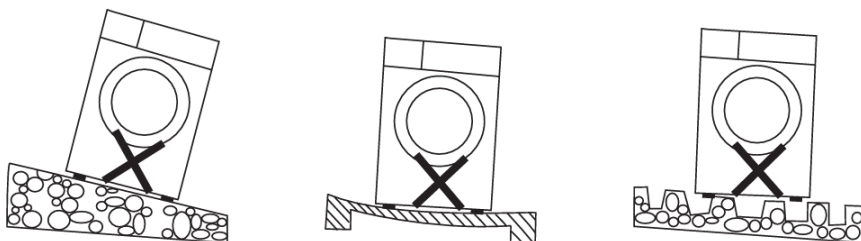


Please note that this image is a schematic representation intended for reference purposes only. The actual machine may differ from what is shown.

# Installation instruction

## • Install the clothes dryer

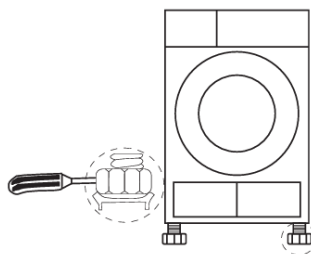
1. It is advisable to position the clothes dryer near the washing machine to facilitate the drying process immediately after washing and spinning.
  2. To prevent dust accumulation from blocking its fan cover, place the clothes dryer in an area with minimal dust.
  3. Please remove all packaging from the clothes dryer and place it on a firm and flat surface, avoiding blankets or brackets.
  4. Adjust the feet to level the clothes dryer during installation. Do not place plush carpets or wooden strips under the feet, as this can disrupt the machine's operation.
1. Note that the installation position shall be at least 5cm away from other furniture or walls.



## • Level adjustment

Adjust the feet to ensure that the clothes dryer is placed horizontally.

- The height can be modified by rotating the adjustable feet.
- Tools can be used to adjust the height of the clothes dryer feet.  
Note: Select a screwdriver with a diameter of less than 4.5mm for this adjustment.



## Connection of power

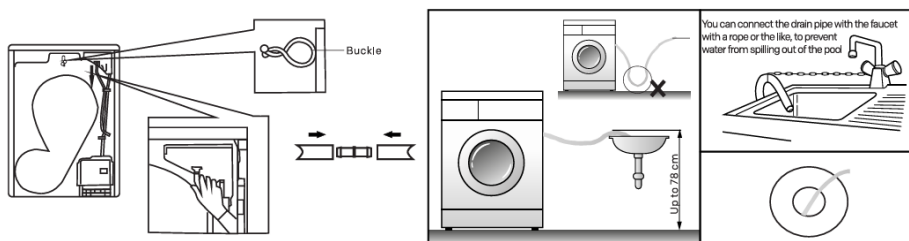
1. Ensure that the power meets the requirements on the electric nameplate of clothes dryer.
2. Do not use the power strip or universal socket for secondary connection.

# Installation instruction

## • Accessories installation

Install accessories when required. The clothes dryer can operate normally without additional accessories.

Install the external drainpipe if required. If it is not installed, use the water storage box.



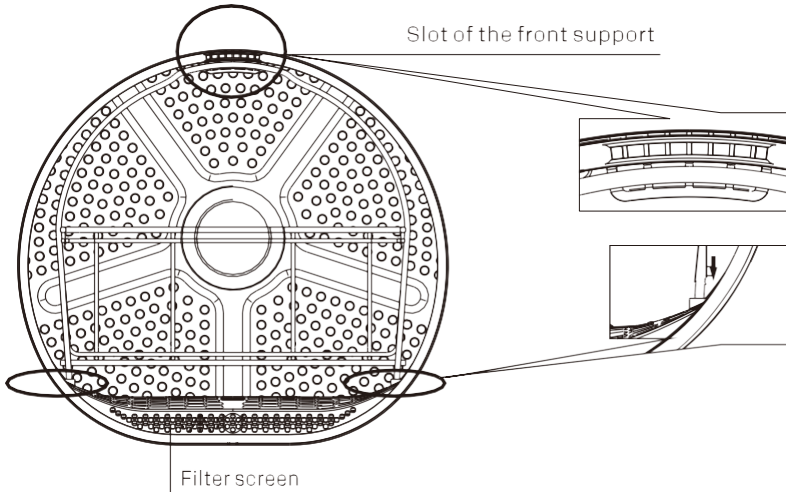
1. Pull out the upper drainpipe downward.
2. Connect the upper drainpipe with the external drainpipe.
3. Fix the external drainpipe on the buckle

Put the external drainpipe into the sink or floor drain.  
(Note that don't bend the external drainpipe)

**Attention: Make sure the whole pipeline is unobstructed!**

# Installation instruction

## • Accessories installation



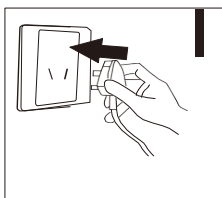
Install the steel bracket according to step 2 first, and then put the plastic bracket onto the steel bracket

\*This picture is only for the product with the rack and holder

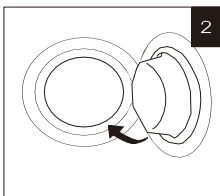
# Quick start

NOTE: Please ensure that the machine has been installed correctly in accordance with the installation instructions before use.

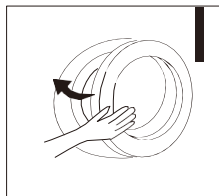
## Step 1: Preparation for drying clothes



Plug in the power plug



Put in clothes



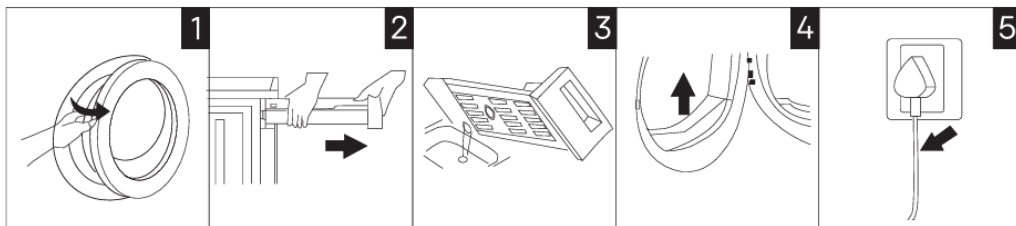
Close the door

## Step 2: Start drying clothes



## Step 3: End of drying clothes

When drying is finished, the clothes dryer will have a sound prompt, or the word "End" will be displayed on the display screen.



Open the door, take out the clothes

Pull the water storage box

Pour out the water in it

Clean the filter screen (there are two filter screens)

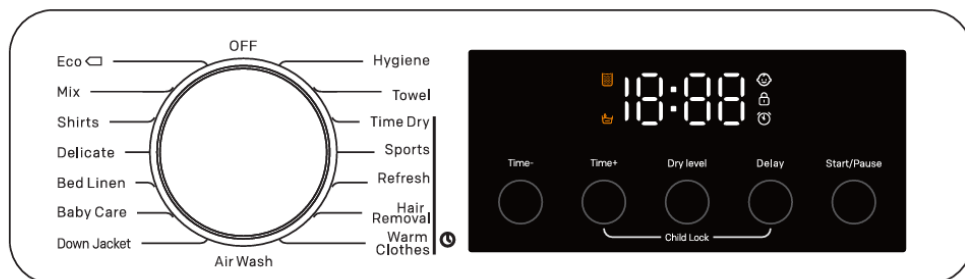
Cut off power

Note:

1. If you are using a socket with a switch, please directly press the switch to turn off the power.
2. When pouring the water into the water storage box, pour it directly (without opening other parts).

# Functions and Programs

- **Introduction of operation panel functions**



## 1. Start/Pause button

Press the "Start/Pause" button to start or pause the procedure.

## 2. Delay

Press the "Delay" button to enter the delay setting, press the "Delay" button again to select the delay time, and then press the "Start/Pause" button to start the delay. The delay time shall be selected after selecting the procedure and before pressing the "Start/Pause" button.

After the delay is started, all buttons except the "Start/Pause" button are invalid.

## 3. Dry Level

Press the "Dry Level" button to select the degree of dryness. Different procedures have different setting ranges for dryness. As for timing procedure, the degree of dryness cannot be selected. There are 3 degrees of dryness: L1(dry) L2(drier) L3(extra dry)

## 4. Time-, time+

It is used to adjust the clothes drying time, Different procedures have different setting ranges of drying time. In some procedures. It can't choose drying time.

## 5. Child lock

To prevent children from inadvertently operating the machine, the child lock function can be activated.

During the running of the procedure, press the "Time+" and "Delay" button to enter the child lock state, and the child lock indicator is on. Press the "Time+" and "Delay" button again to release the child lock state, and the child lock indicator goes out.

Under the child lock state, all buttons are invalid.

## Introduction of other functions



Filter screen indicator: Prompts the user to clean the filter screen.



Water storage box indicator: Prompts the user to clean the water storage box.


- Add clothes halfway: During the drying, press the "Start/Pause" button, then the clothes dryer will pause, and you can open the door to add clothes.
- Reservation time refers to the time from the beginning of reservation to the end of drying.
- After the running procedure is finished, if there is no alarm, the End will be displayed, and the music will sound to prompt the user. If the user has no operation within 5 minutes, it will automatically switch to the wrinkle prevention procedure. After the wrinkle prevention is completed, the machine will automatically shut down. Under the End state, if you open the door, the machine will directly enter the Shutdown state and sound a prompt.

## Function and Program

The following procedures are applicable to 9.0/10.0 kg models:


Name	Capacity(kg)	Introduction
OFF		Shut down the clothes dryer
ECO	9.0/10.0kg	Dry cotton fabric
MIX	4.5 /5.0 kg	For the fabric blending cotton fabric and synthetic fabric
Shirts	1.0kg	Used for drying Shirts
Down Jacket	1.5kg	Used for drying down-filled coat/duvet
Delicate	3.0kg	Silk and other clothing that is not resistant to high temperatures
Hygiene	<3.0kg	For the clothes stored for a long time, carry out sterilization treatment
Time Dry		Timed Procedures
Warm clothes	A little	Timing procedure/warm the clothes
BedLinen	4.5 /5.0 kg	Used for heavy loads such as sheets
Baby Care	1. 0kg	Drying baby cotton fabric clothes
Air Wash	A little	Tumbles with just warm air
Towel	3.0kg	Drying Towels
Sports	A little	Timed Procedures/Breathable clothing such as sportswear
Refresh	A little	Timer procedure/Deodorization Freshness
Hair Removal	A little	Timer procedure/cleaning lint

Note:


- Users can follow the recommended procedures based on personal habits. If clothes aren't fully dried, use the timing adjustable procedure to continue drying.
- The timing adjustable procedure doesn't judge wetness. Repeat or adjust drying time if clothes remain wet.
- Large items like sheets or curtains may ball up during drying. If this happens, stop the dryer, shake out the fabrics, then resume drying.
- Turn down-filled coats inside out before drying.
- The default start time is the machine's initial setting. Temperature, humidity, and the type and weight of clothes affect drying time.
- The humidity sensor adjusts the drying time automatically, reflecting changes on the LED display.
- Procedures with the icon  indicate a timed process that stops when the set time ends.

## Preparations before drying clothes

### Note

 After handling, please stand the machine upright for more than 2 hours before using and use a soft cloth to clean the inner barrel before first use.

- a) Put some clothes in the inner cylinder.
- b) Plug in and press the "Power" button.
- c) Select the "Timing drying" procedure and press the "Start/Pause" button.
- d) After the procedure finishes, please clean the filter screen according to the content in the "Cleaning and maintenance".

 During the operation of the clothes dryer, the compressor and drain pump will generate some sounds, this is normal.

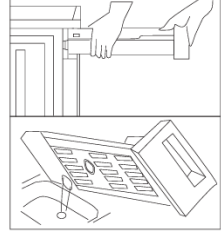
1. Remove excess moisture from clothes before placing them in the dryer. The more dry the clothes are beforehand, the more time and electricity you'll save. This can be achieved by using the best spin cycle during washing.
2. Prepare the clothes before drying, shake them out, zip up zippers, and button up buttons. To prevent noise, turn clothes inside out before placing them in the dryer.
3. Clean the lint filter before starting the dryer.
4. Select the appropriate drying cycle based on the fabric type and care label instructions.
5. Sort clothes properly to achieve the best drying results. Avoid mixing items of different thicknesses or varying levels of dampness.
6. Use a timed drying cycle when drying a small number of items.
7. Dry large fabrics carefully (such as sheets and curtains). If they clump together during drying, pause the cycle, shake them out, and restart the drying process.
8. Use a fabric softener when washing clothes that will be dried in the dryer for better results.
9. Dry heavy fabrics effectively. Items like jeans or large towels may not dry completely due to their thickness. If they remain damp after a cycle, use the "Timed Drying" setting to extend drying time.

# Dryer Cleaning and care.

Empty the water storage box

Steps:

1. Hold it with both hands and pull the water storage box
2. Pour the water out of water storage box
3. Set the water storage box to its original position.



## Warning

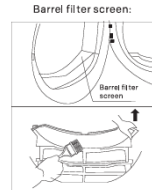
- Empty the water storage box after each use. If the box fills up during drying, the cycle will pause, and the water box indicator light will turn on. Empty the water storage box, then press the "Start/Pause" button to resume drying.
- Condensed water is not safe for drinking!
- Do not operate the dryer without the water storage box.

## Cleaning the Filter Screen Assembly

The dryer has one or two filter screens, depending on the model. Clean the filter screen after each use.

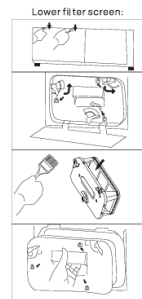
### Cleaning the Barrel Filter Screen:

- Open the dryer door.
- Remove the barrel filter screen.
- Open the filter screen and clean it thoroughly.
- Place the filter screen back in its original position.



### Cleaning the Lower Filter Screen:

- Pull open the lower filter screen located in the lower left corner of the machine
- Turn the knob to open
- Take out the filter screen and clean it thoroughly.
- Place the filter screen back in its original position.



### Cleaning steps:

1. Clean the filter screen and vent, remove accumulated fluff and then clean with running water or a soft brush.
2. Ensure the filter screen is completely dry before reinstallation.

## Cleaning and maintenance

### Warning

Too much fluff on the filter screen will block air circulation, which will delay drying time and increase energy consumption!

Do not use the clothes dryer when there is no filter screen!

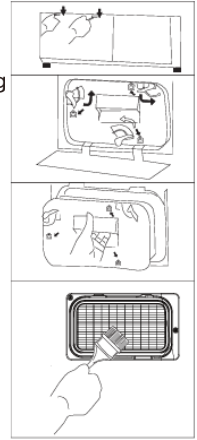
Clean the filter screen after each use!

### Clean the heat exchanger

To maintain optimal drying performance, clean the heat exchanger reg

#### Steps to Clean the Heat Exchanger:

- Turn off and unplug the dryer before cleaning.
- Open the heat exchanger cover (refer to your user manual for the specific location).
- Remove any lint or debris using a soft brush or vacuum cleaner.
- Wipe the heat exchanger surfaces gently with a damp cloth.
- Avoid using sharp objects or excessive force.
- Ensure the heat exchanger is completely dry before closing the cover.
- Secure the cover properly before using the dryer again.
- Regular cleaning improves efficiency and extends the lifespan of your dryer



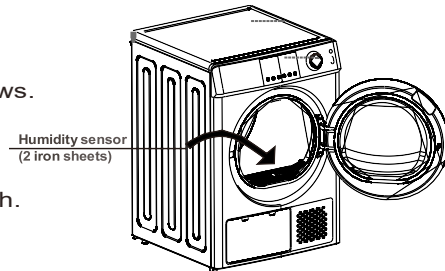
### Warning

- Disconnect the power before cleaning!
- Wear gloves when cleaning.
- When cleaning the surface or other parts of the clothes dryer, use a clean wet cloth, as the plastic surface or other parts may be damaged.
- Do not rinse the clothes dryer directly with a tap water hose or high-pressure water gun.

#### Cleaning steps:

- Prepare a wet cloth
- Clean the door, especially the internal windows.
- Clean the ring around the front support.
- Clean the humidity sensor of the drum.
- Clean fluff in the air duct.

Before starting the machine, dry it with a soft cloth.



# Troubleshooting Guide

## Cleaning and maintenance


Note: The humidity sensor is located inside the drum of the clothes dryer and is under the collection port.


Do not clean drum with corrosive detergent, or don't scratch the humidity sensor.

## Alarm prompt

Alarm prompt	Alarm reason	Solution
OE	The water storage box is full, or the drain pump is abnormal	If the fault is not solved after emptying the water storage box, please call Customer service.
dE	The door is not closed, or the door is not closed completely	If the fault has not been solved after closing the door again, please call Customer service.
LE	The filter screen is not cleaned, or motor is abnormal	If the fault is not solved after cleaning the filter screen, please call Customer service.
HE	The compressor is abnormal	Please turn off power and call Customer service.
tE1	Temperature of front air duct is abnormal	
tE2	The condenser temperature is abnormal	
SE	The humidity sensor is abnormal	

Remarks:

When  appears during the machine operation, please check whether the water storage box is full. If so, please empty it and restart the machine. If not, please start the machine directly.

When  appears during a cycle, please check whether the barrel filter screen and the lower filter screen are full. If the filter screen is full of fluff, please clear it and restart the machine; if not, please start the machine directly.

# Troubleshooting Guide

## Faults and treatment methods



Only authorized professional service technicians can repair the clothes dryer!

Before calling customer service, please confirm whether the fault can be resolved from the below or if the fault is a manufacturing fault.

Problem	Solution
There is nothing on the display	Check the plug is working and there is power going to it
The clothes dryer is not starting	Confirm the door of the clothes dryer is closed. Confirm whether the program is selected, and the "Start/Pause" button is pressed.
The door opens automatically	Press and hold the door handle, so that the door lock can be locked in the corresponding position. Check whether the clothes are overloaded.
The drying standard is not reached, or the drying time is too long	Clean the barrel filter screen and lower filter screen. Use a more appropriate drying procedure; ensure that the fan cover is not obstructed.

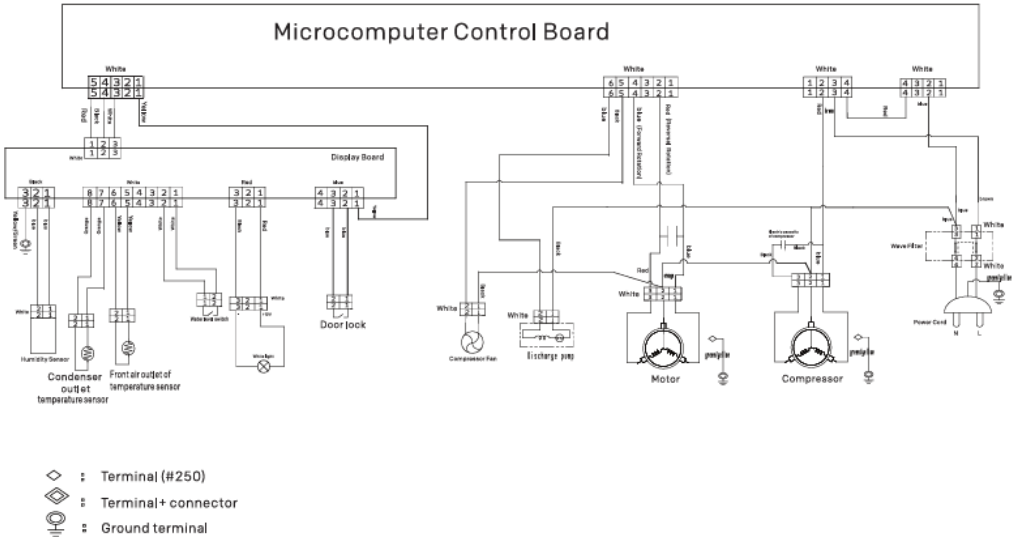


If you can't eliminate the fault, please:

1. Turn off power of the clothes dryer.
2. Call our service number.

# Specification

Model	P279HPSKW	P2710HPSKW
Maximum drying capacity (kg)	9.0	10.0
Rated power (W)	800	850
Product size (w*d'h) (mm)	595*670*850	595*670*850
Packing size (w* d'h) (mm)	700*755*885	700*755*885
Net weight (kg)	52	52
Gross weight (kg)	58	58
Refrigerant	R290	R290
Filling amount of refrigerant (g)	See nameplate	See nameplate



This symbol signifies that the product should not be disposed of with regular household waste in the EU.

To prevent potential harm to the environment or human health from improper disposal, please recycle it responsibly and support the sustainable reuse of materials.

To return your used device, utilize designated collection systems or contact the retailer where it was purchased. They can assist in ensuring its safe and environmentally friendly recycling.

Separate collection systems exist for electronic and electrical waste—please contribute to keeping our environment clean.



This product is designed and corresponds to all European directives and requirements.



## POWERPOINT STANDARD MANUFACTURER WARRANTY

### TERMS AND CONDITIONS

This appliance was supplied by Shomar Ltd, Dublin. We provide all after sales service from our Headquarters in Dublin.

#### 12 Month Warranty

This Warranty is for 12 Months from Date of Purchase and covers both Parts & Labour. Any complaints that occur during normal use of these appliances will be repaired free of charge provided the appliance has been used and maintained in accordance with the Terms and Conditions.

If a repair to your appliance is necessary evidence of purchase will be required for a call to be covered by your Warranty.

#### Two-year Warranty

To avail of the second-year free warranty, you must register your new appliance with Shomar Ltd. Registering your appliance will also allow us to contact you in the unlikely event that a modification is required. In case of an insurance loss such as theft, fire or flood, your registration will serve as proof of purchase. Scan our QR to register your warranty -



[www.powerpointappliances.ie](http://www.powerpointappliances.ie)

#### Terms and Conditions

The Warranty only covers the appliance for use in a normal domestic environment. Institutional use or commercial use is not covered. (To obtain a commercial Warranty on your appliance contact us on [service@shomar.ie](mailto:service@shomar.ie) for more details)

The following is not covered by the Warranty:

- Complaints due to the use of incorrect voltage.
- Failure of the water supply
- Failure of the electricity supply
- Failure to operate the appliance in line with the guidelines set out in the instruction manual.
- Damage to the appliance or its components however caused.
- Consumable items. E.g. Fuses, bulbs, broken glass, Knobs, Plastics.
- Blockages of Filters, drainage systems, soap dispensers etc

Note:

- Repairs or modifications carried out by anyone other than Shomar authorised agents will deem the Warranty Null and Void. Please visit [www.powerpointappliances.ie](http://www.powerpointappliances.ie) to obtain information on authorised agents.
- All Gas appliances must by law be fitted by a Registered Gas Installer. For further details see [WWW.RGI.IE](http://WWW.RGI.IE)
- Built In appliance installation and reversing the door hinges must be undertaken by a competent person.
- If in any doubt about the installation of our domestic appliances please email us for more details. [service@shomar.ie](mailto:service@shomar.ie)

How to log a service call:

If in the event you need to log a service call for your appliance you can contact our service department on Ph: 01-4505327 (during working hours)

Email [service@shomar.ie](mailto:service@shomar.ie)

Go online [www.powerpointappliances.ie](http://www.powerpointappliances.ie)

This Warranty does not in any way diminish or affect your statutory rights in connection with the product. This Warranty is in addition to your statutory rights as a consumer. If you have any questions about these rights, please contact the retailer from which you purchased the product. In certain circumstances, it is possible that your statutory rights may offer additional or higher levels of protection than those offered under the terms of this Warranty.

This Warranty applies only to the cost of repairing the product. To the extent permitted by law, the Manufacturer does not accept and will not be held liable for any financial loss incurred in connection with the failure of any product to operate in accordance with the expected standards. Such financial loss includes but is not limited to loss arising from:

- Food Loss
- Time taken from work
- Damaged clothing or other items
- Laundry costs
- Meals from Restaurant /Takeaways
- General Compensation for Inconvenience

### **Does PowerPoint offer replacements?**

This is a repair-only Warranty. On occasion, the Manufacturer may at its sole discretion, replace your product with a new product instead of carrying out a repair. In the unlikely event we cannot repair your appliance it will be replaced free of charge, replacement will be authorised and provided by the retailer upon contact from the manufacturer.

Any costs related to disconnecting the faulty product and installing the replacement product will not be borne by the Manufacturer unless previously agreed to in writing. The original Warranty will continue to apply to the replacement product; the new product will not come with a new Warranty.

Will I be charged for the repairs?

It is the responsibility of the consumer to provide proof of purchase to the Engineer to ensure your product is covered by this warranty. The Manufacturer reserves the right to charge for service call if:

- You cannot provide proof of purchase that your product is covered by this Warranty.
- The engineer finds that there is no fault with your product.
- That your product has not been installed or operated in accordance with the User Manual.
- That the fault was caused by something other than faulty materials, defective components, or manufacturing defects.
- For missed appointments.

Payment is due immediately upon the Engineer providing you with an invoice. The Manufacturer reserves the right to terminate the Warranty if you fail to pay the costs for the service call. The spare part availability of this appliance is 10 years. During this time, original spare parts will be available to operate the appliance properly.

This appliance was supplied by Shomar Ltd Dublin. If you would like to contact us in relation to your product for service or spare parts, we can be contacted on 01-4505327 or [service@shomar.ie](mailto:service@shomar.ie).

The model information stored in the product database can be reached by scanning the above QR Codes or by visiting <https://eprel.ec.europa.eu/> and entering the following registration numbers:  
2203972 / 2205287

